

# CPX80I

## 5G Industrial Outdoor CPE



CAT20

5G NR/LTE/WCDMA

RS485/RS232

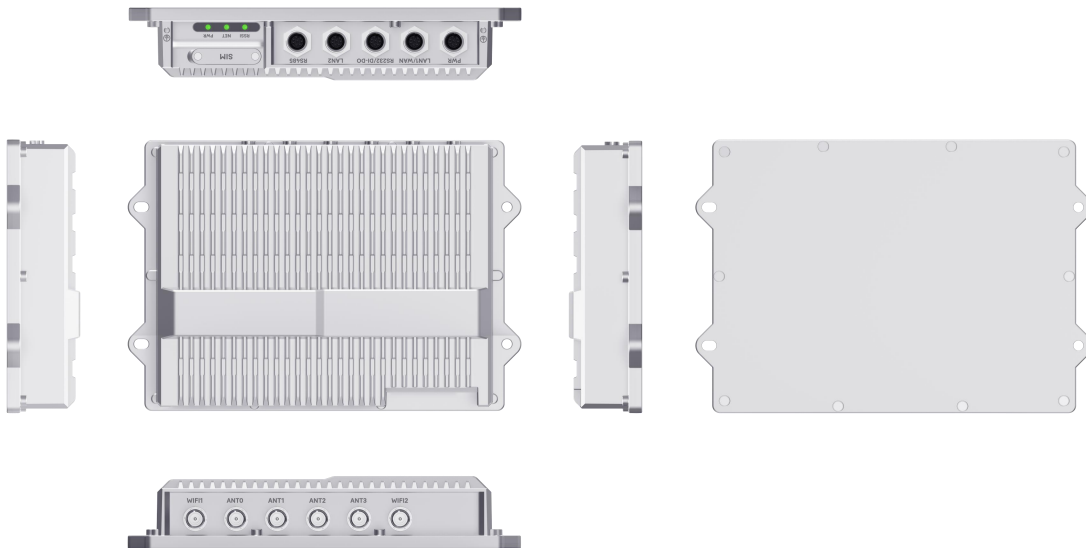
IP67

The CPX80I from BTI WIRELESS is a 5G Industrial Outdoor CPE. It supports various 4G/5G spectrums and ultra-high speed in a ruggedized form factor. This product offers industrial-grade environmental qualifications while providing high speed data services for the bandwidth-intensive applications. Up to IP67 with water-proof, shock-resistant, and lightning-proof, combined to ensure the quality of wireless communication under different outdoor environments.

## KEY FEATURES

- Qualcomm SDX62 chipset solution
- Supports BOTH SA and NSA
- Global/CBRS bands supported
- Ruggedized and anti-vibration design
- Powerful software features, supporting all router features
- Supports Wi-Fi 6
- Web, TR069 and SNMP based device management
- Supports 2.5G WAN/LAN & 1G LAN and diverse industry interfaces
- IP67 rating for outdoor environment

## SYSTEM ELEMENTS



## HARDWARE SPECIFICATIONS

3GPP	3GPP Rel-16	
Module	Quectel RM520N-GL	
Cellular Bands	5G NR	n1/n2/n3/n5/n7/n8/n12/n13/n14/n18/n20/n25/n26/n28/n29/n30/n38/n40/n41/n48/ n66/n70/n71/n75/n76/n77/n78/n79
	LTE	<u>LTE-FDD</u> : B1/B2/B3/B4/B5/B7/B8/B12/B13/B14/B17/B18/B19/B20/B25/B26/B28/B29/B30/B32/B66/B71 <u>LTE-TDD</u> : B34/B38/B39/B40/B41/B42/B43/B46(LAA)/B48
	WCDMA	B1/B2/B4/B5/B8/B19

Copyright © 2024 BTI WIRELESS All rights reserved.

<b>GNSS</b>	GPS/GLONASS/BeiDou/Galileo
<b>WiFi</b>	Support 2.4GHz/5GHz dual band and IEEE802.11 b/g/n/ac/ax Wi-Fi
<b>Network Mode</b>	Supports SA/NSA
<b>External Port</b>	1 x M12 for power supply 1 x M12 for 10/100/1000Mbps compatible GE port 1 x M12 for 2.5GHz GE port 1 x M12 for RS232 + 2 x DI + 2 x DO 1 x M12 for RS485 2 x Nano SIM Slot (4FF, Dual SIM Single Active)
<b>Antenna Port</b>	4 x TNC connector for NR&LTE&GNSS antenna 2 x TNC connector for 2.4&5GHz Wi-Fi antenna
<b>LED Indicators</b>	1 x Power indicator 1 x Network status indicator 1 x RSSI indicator
<b>Button</b>	1 x reboot or restore button
<b>MIMO</b>	UL 2x2 MIMO on n38/n41/n48/n77/n78/n79 DL 4x4 MIMO on n1/n2/n3/n7/n25/n30/n38/n40/n41/n48/n66/n70/n77/n78/n79 and B1/B2/B3/B4/B7/B25/B30/B38/B40/B41/B42/B43/B48/B66 Wi-Fi 2x2 MIMO
<b>Carrier Aggregation</b>	LTE: DL 5CA and UL 2CA NR: 2CA
<b>ENDC</b>	Support
<b>Power Supply</b>	DC 12~36V
<b>Power Consumption</b>	< 24W
<b>Dimensions</b>	259 x 178 x 48 mm
<b>Weight</b>	≈2KG   4.41 lbs
<b>Humidity</b>	Operation/Storage: 5% - 95% (non-condensing)
<b>Temperature</b>	Operating temperature: -40 °C ~ +70 °C   -40 °F ~ +158 °F Storage temperature: -40 °C ~ +85 °C   -40 °F ~ +185 °F

## SOFTWARE SPECIFICATIONS

<b>Data Services</b>	4 x APNs
	Multiple PDN
	IPV4/IPV6 compliance
<b>LAN</b>	IEEE 802.1Q VLAN
	DHCP V4/V6
	DNS and DNS proxy
	DMZ
	UPNP

	ALG	
	ARP/ICMP/IGMP	
Management	MAC address filtering	
	Version management: Image checksum	
	HTTP/FTP auto-upgrade	
	TR069	Upload/ Download the ACS specified file
		Download the configuration file
		Configure & queries parameters
		Remote upgrade
		Remote debugging operations
		Cycle monitor
	SNMP	
	WebGUI/ CLI	Various level of user login priority with different limitation and display
		Encryption backup current settings and restore the backup settings
		Export current diagnosis results and operation logs
		Statistics of LAN link status, transmit and receive traffic and up time
	Diagnostics	
	USIM PIN management and card authentication	
	USIM activation	
	NAT/Bridge mode	
	Port mirror/Port forwarding	
VPN & Routing	Static Routing	
	IPSec	
	PPTP	
	GRE tunnel	
	L2TP V2/V3	
Security	Firewall	
	Mac address filtering	
	IP address filtering	
	URL filtering	
	Access control	
	HTTPS login from WAN	
	DDOS attack protection	
	Hierarchical user management	

## COMPLIANCE SPECIFICATIONS

**Environment Compliance**    Protection rating: EN60529:IP67

	Salt mist: IEC68-2-11,72H
	Shock: IEC60068-2-27/EN50155/EN61373
	Free Fall: IEC60068-2-32 (1 meter height with package)
	Vibration: IEC60068-2-6/EN50155/EN61373

Contact Us

[www.btiwireless.com](http://www.btiwireless.com)[sales@btiwireless.com](mailto:sales@btiwireless.com)