



Network Management System

Friendly web-based GUI

 Without the written permission of us, no part of this publication may be copied, transmitted, transcribed, stored in a retrieval system or translated into any language in any form (electronic, mechanical, photocopying, recording or other).

 All copyrights, confidential information, patents, design rights and other intellectual property rights of any nature contained in this agreement are and will continue to be the exclusive property of us. The information provided here is believed to be accurate and reliable.

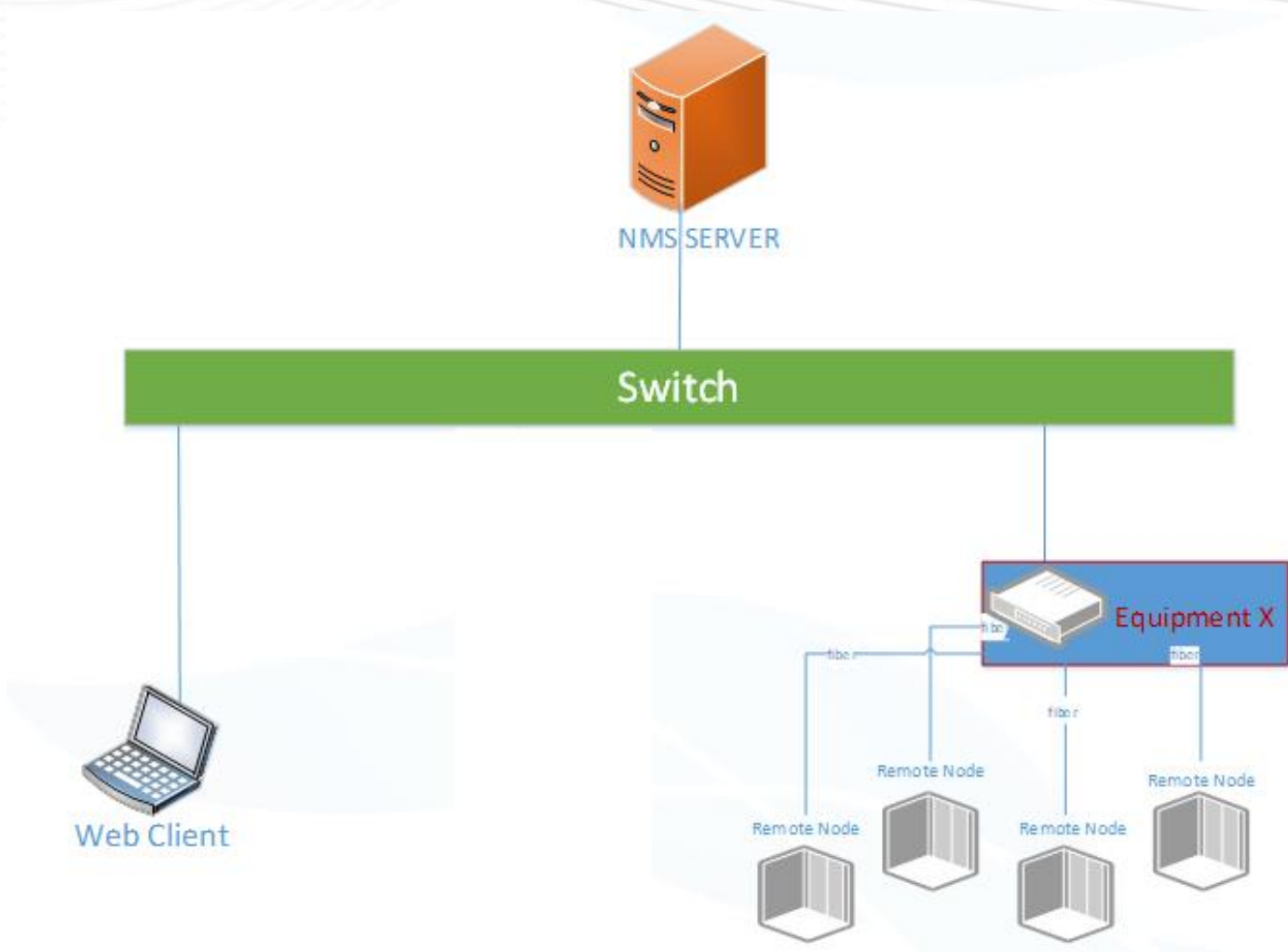
Summary

NMS (Network Management System) is a comprehensive management software that controls and monitors base station and CPE equipment supporting TR069 communication protocol. NMS can be located in the front-end computer room to manage a single device, or it can be located in a centralized location to manage multiple devices. NMS is based on the most advanced mechanism and technology, and a single set software can manage and monitor up to 10,000 devices.

The management system includes the following extensive functions:

Data Statistic	Equipment Management
Core Network Management	Configuration Management
Alarm Management	Performance Management
Upgrade Management	Log Management
System Management	Task Management
Authority Management	Platform Monitoring

Block Diagram



System Requirements

Hardware	Quantity of NE < 100	100 < Quantity of NE < 10000
CPU	4 cores or more, 1.5 GHz or more	8 cores or more, 2.1GHz or more
RAM	16GB or more	64GB or more
SSD	200GB or more	2TB or more

Software		
Operating system		Rocky 9.4 or higher
Language		English
Database		MYSQL 8.0.21
Tomcat		Tomcat 9 jre11
Rabbitmq		3.8.7
Redis		6.0.5
Docker		19.03.9
Docker-compose		2.17.2

Function

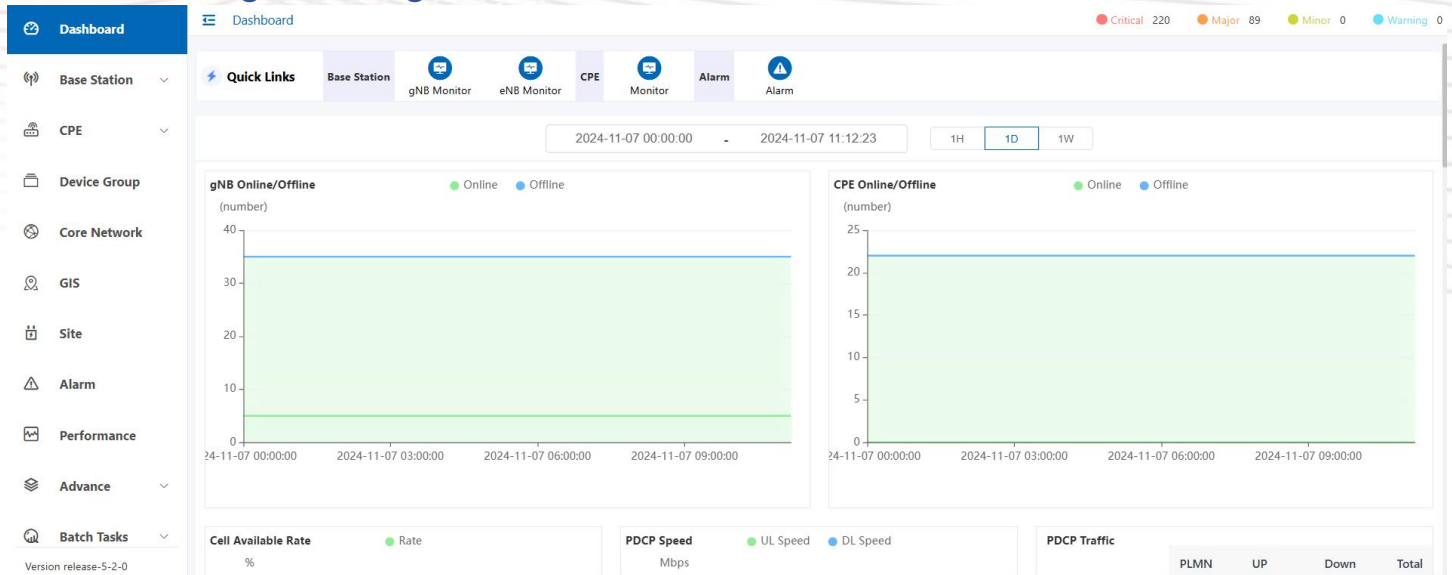
Function		
Menu on NMS		
Dashboard	Dashboard	Show the quick links and statistical information
	gNB Monitor	gNB basic information monitoring and gNB configuration
	eNB Monitor	eNB basic information monitoring and eNB configuration
	MML	MML and MML Script modify device configuration
	Upgrade	Base station upgrade files and upgrade tasks management
	Reboot	Base station restarting task management
	Shutdown Task	Base Stations Remote Shutdown Management
	Backup/Restore	Configuration backup and restore
	Log	Base station log management, base station gather log, operation log, and parameter value change log.
	Topo	Base station topology
Base Station	CBSD CertFile	CBSD certification file management
	CPE Monitor	CPE information monitoring and CPE configuration
CPE	Upgrade	CPE upgrade files and upgrade tasks management

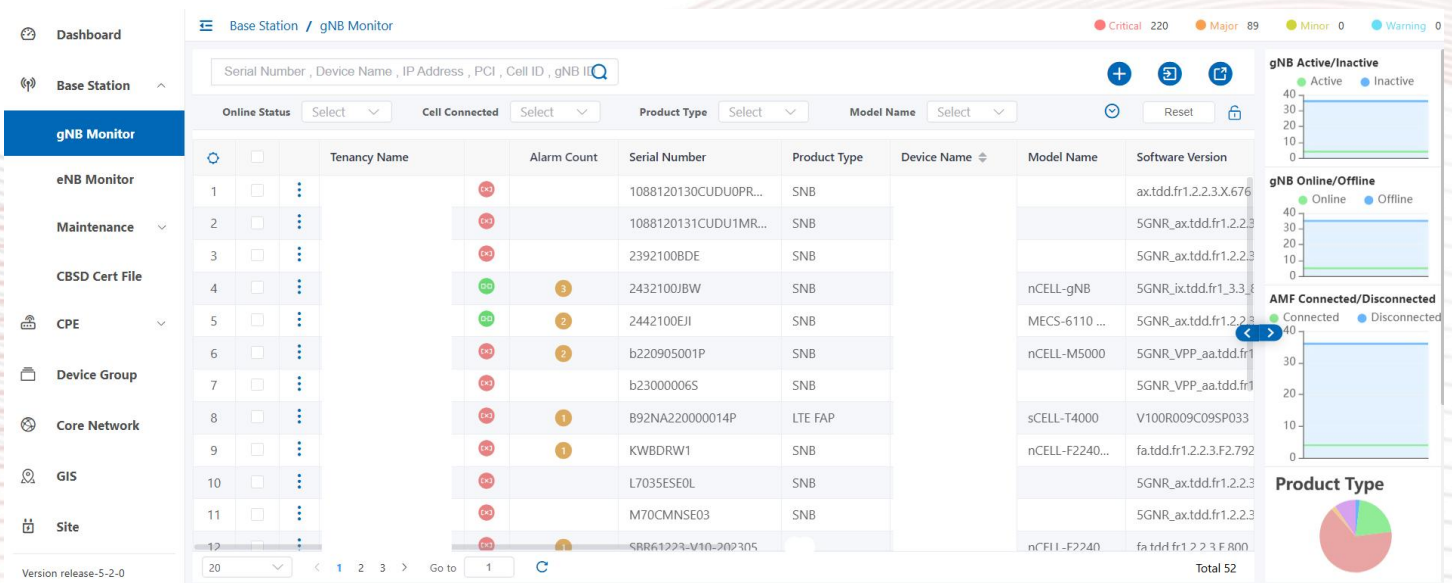
	Reboot	CPE reboot management
	Log	CPE log management, CPE log file, operation log, and parameter value change log.
	CBSD CertFile	CBSD certification file management
	Configuration	Query and configure core network parameters
Core Network*	Alarm	Alarms raised by core
	Element Information	Check basic information of core element
	UE Info	Manage and check the UE information under the core
	NE Location	GPS location display on the map
GIS	NE Location	GPS location display on the map
Site	Site	Manage the site location information
Device Group	Device Group	Manage devices in groups
Alarm	Alarm View	Alarm management, including current alarms, historical alarm information, alarm filtering, alarm email forwarding, alarm synchronization configuration, and alarm statistics
	Alarm Library	Alarm information and the introduction of the alarm
Performance	KPI View	Check the KPI of different NE
	KPI Measurement	Upload status of base station PM files
	KPI Management	KPI management
	KPI Alarm	KPI alarm management
Advance	SAS	CBRS Domain Proxy
Batch Task	Monitor	Parameter value monitoring and display
	Configuration	Batch configuration management
MR Mange	Measurement Report	MR file collection task management
	MR File	MR file management
	Analyze	MR file analysis
Device Blocklist	Device Blocklist	Device blocklist management
	Setting	System configuration management
	SSH	SSH Proxy
System	PING	PING detecting tool
	TCP Dump	NMS packet capture
	NTP	NMS NTP management

Load	Server load monitoring
Logs	NMS log management, including NMS operation logs, northbound access logs and NMS platform logs
Data Model	Configuration management
Upgrade	NMS update and roll-back management
License	License management
Authority	Authority management
Area	Area management

*Manage the core which build-in integrated gNB

Dashboard and gNB Management





Ordering Information

Part Code	Part Description
license1	Network Management System, with XX element license. Including server.
license2	Network Management System, with XX element license. Excluding server, with 1-year free remote service.
license3	Network Management System, maintenance cost for 1 year.

Contact Us Today

www.btiwireless.com

sales@btiwireless.com